

INITIATIVE FOR THE INTEGRATION OF REGIONAL
INFRASTRUCTURE IN SOUTH AMERICA
IIRSA



ANNEX 13
Paraguay-Paraná Waterway Hub

IX Meeting of the Executive Steering Committee of
IIRSA

December 4th and 5th, Montevideo, Uruguay



PARAGUAY-PARANA WATERWAY HUB

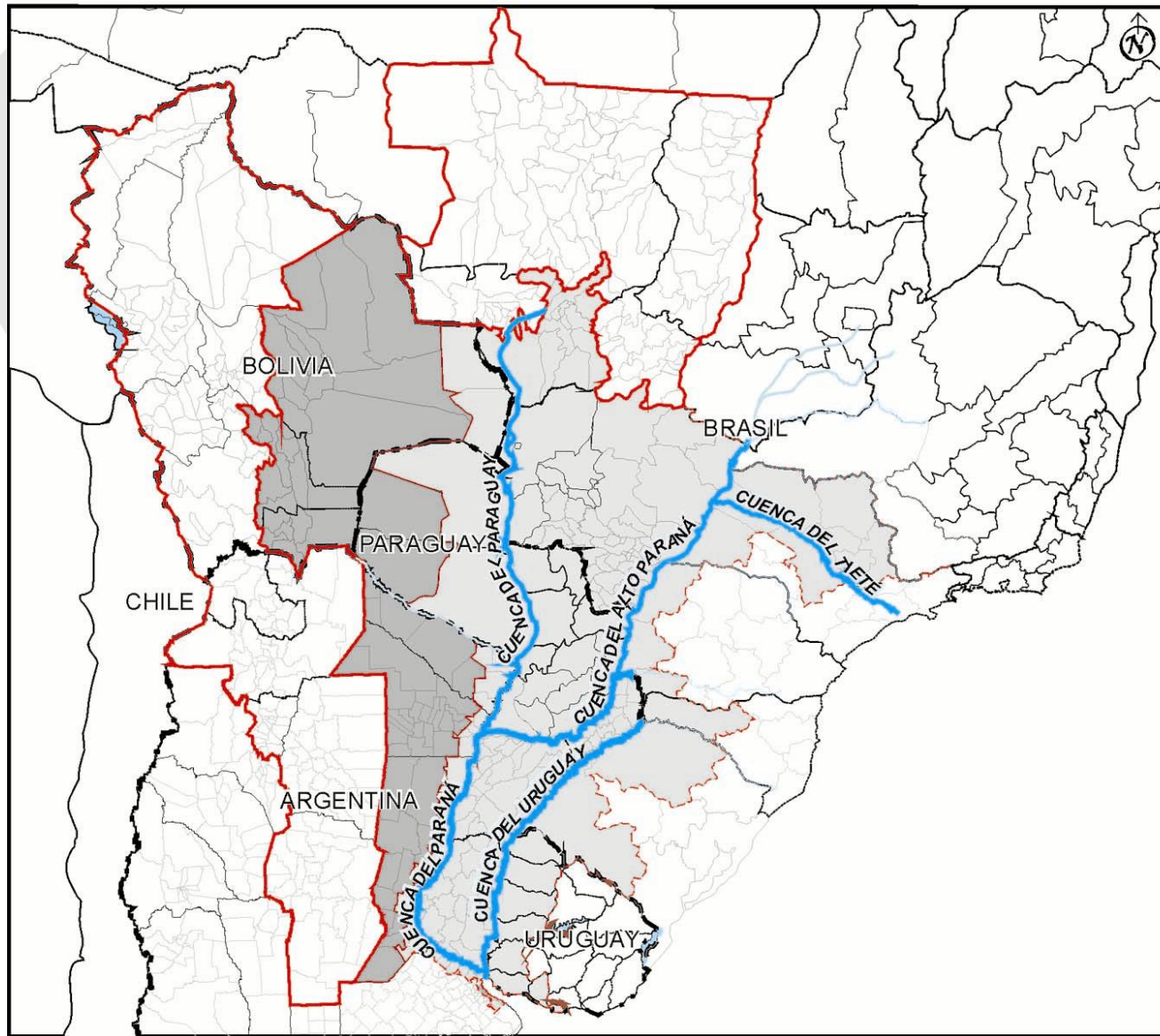
GTE carried out in Santa Cruz de la Sierra, on August 21st and 22nd, 2007.

WORKS COMPLETED:

- Presentation of the Business Vision of the Hub
- Analysis of the Hub territory and identification of groups of projects
- Setting of the Strategic Functions in each group
- Identification of the Anchor Projects
- Identification of the Sectoral Integration Processes that may be applied to the groups of projects



PARAGUAY-PARANA WATERWAY HUB: INFLUENCE AREA



HIDROVÍA
PARAGUAY-PARANÁ
TIETÉ- ALTO PARANÁ
BAJO URUGUAY

EJES

- ÁREA DE INFLUENCIA INMEDIATA A LA HIDROVÍA
- ÁREA DE INFLUENCIA MEDIATA A LA HIDROVÍA
- ÁREA DE INFLUENCIA REGIONAL A LA HIDROVÍA

Lic. Adolfo Koutoudjian
AGOSTO 2007



PARAGUAY-PARANA WATERWAY HUB

IDENTIFIED GROUPS

- Group 1 Río Paraguay, Asunción-Corumbá
- Group 2 Ríos Tieté-Paraná (Itaipú)
- Group 3 Ríos Paraguay-Parana, Asunción-Delta
- Group 4 Río Paraná, Itaipú-Confluencia
- Group 5 Río Uruguay



Number of Projects by Group and Type

Group	N° proj.	TICs	Energ	Rail	River	Multm	Port	Road	Air
Group 1 Río Paraguay, Asunción-Corumbá	12	1	0	1	5	0	1	4	0
Group 2 Tieté-Paraná (Itaipú)	20	0	1	4	3	1	6	5	0
Group 3 Ríos Paraguay-Paraná, Asunción-Delta del Paraná	35	2	3	7	3	0	12	8	0
Group 4 Río Paraná, Itaipú- Confluencia	14	0	0	1	3	0	7	2	1
Group 5 Río Uruguay	16	0	1	3	4	0	7	1	0
Total	97	3	5	16	18	1	33	20	1





EJE DE LA HIDROVÍA PARAGUAY-PARANÁ

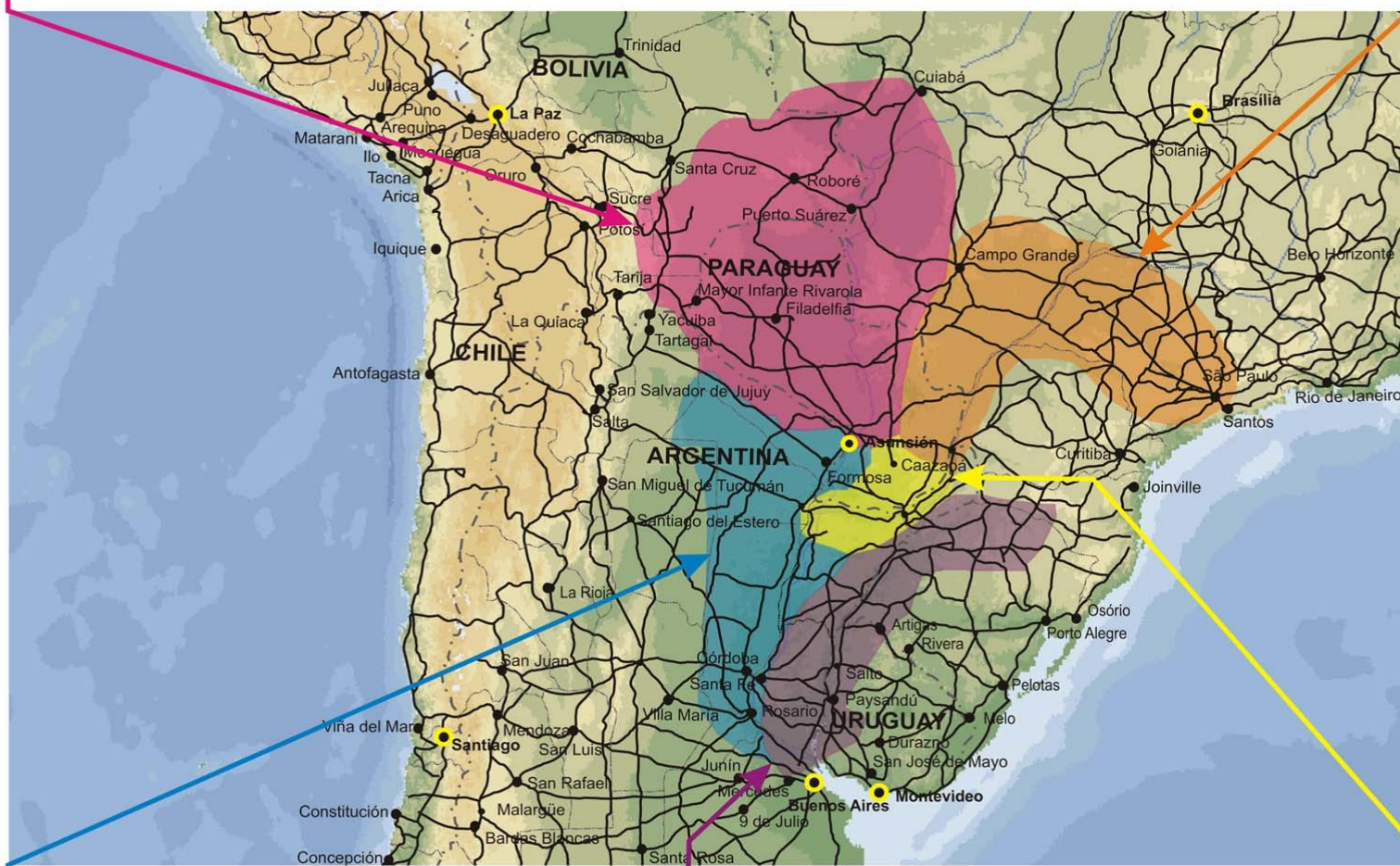
Grupos de Proyectos



IIRSA

Grupo 1: Río Paraguay,
Asunción-Corumbá

Grupo 2: Tieté-Paraná
(Itaipú)



Grupo 3: Ríos Paraguay-Paraná,
Asunción-Delta del Paraná

Grupo 5: Río Uruguay

Grupo 4: Río Paraná,
Itaipú-Confluencia

PARAGUAY-PARANA WATERWAY HUB

PENDING TOPICS

- In 2008, it is necessary to carry out a new GTE of the Paraguay-Parana Waterway Hub in order to complete the application of the Methodology of Indicative Territorial Planing. This will allow to make the hub equal with the rest of the Hubs.
- The consideration and observations made by the countries in relation to the Hub must be dealt.
- To complete the information on the projects in the Database.



THANK YOU!

